

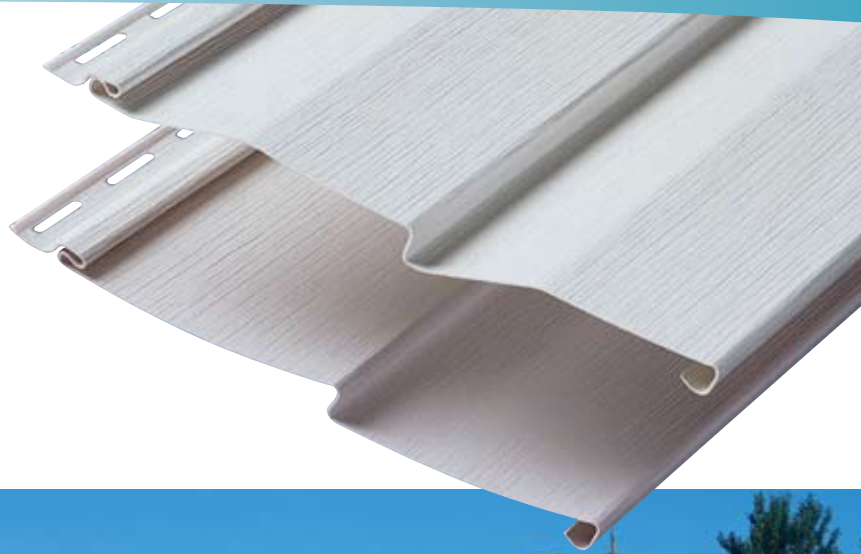
# Bristol Bay™

VINYL SIDING

Choosing an exterior covering is one of the most important decisions you'll make when remodeling or building a home. A superior quality vinyl siding not only adds beauty but enhances your home's value with its durability and timeless style.

With a palette of 14 colors and four profiles, Bristol Bay vinyl siding makes it easy. Maintenance is minimal, repainting unnecessary. And because Bristol Bay colors fully penetrate the panel, you'll never worry about scratches or fading. Beautify your home with an exterior that will never go out of style.

- Attractive brushed finish in 14 popular colors
- Positive locking system assures easier installation
- Easy-care convenience, never needs painting
- Panels remain straight and true
- Produced with Armor Coat UVA™ and Solarkote®PB acrylic high performance polymers for superb color retention and weatherability
- Recognized for its superior quality by architects, contractors and builders
- Four profiles: D4- Double 4, D5- Double 5, DL4.5- Dutchlap 4.5, DL5- Dutchlap 5
- Limited lifetime transferable warranty



### Positive Locking System

Bristol Bay's positive locking system ensures panels fit together for a smooth, clean finish. A reinforced nail hem creates a secure attachment that can withstand gale-force winds.



Harbor Stone



Terra Clay\*



White Birch



Vintage Sage\*



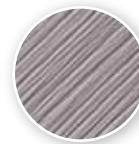
Providence Yellow\*\*



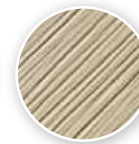
Summer Wheat



Classic Sand



Charcoal Grey\*



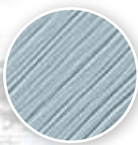
Adobe Clay\*



Concord Green\*\*



Warm Sandalwood



Victorian Slate\*



Autumn Taupe



Sunny Maize

\* Colors made with Armor Coat UVA™ and Solarkote®PB  
 \*\* Special order only on Providence Yellow and Concord Green  
 Colors representations shown may vary slightly from actual product color





## SPECIFICATIONS & FEATURES

### Product Test Data

Siding Thickness	.042" ± .001"
Specific Gravity	1.45
Tensile Strength (PSI)	7,154
Tensile Modulus (PSI)	416,900
IZOD Impact Strength @ 32° F	Passes per ASTM D3679
Heat Deflection Temp. @ 264 PSI	169° F
Coefficient of Linear Expansion	3.30 x 10 <sup>-5</sup>
Weight	42 lbs. per square
Warpage	0.00"
Heat Shrinkage	0.3%
Impact Resistant	Passes per ASTM D3679
Surface Distortion @ 140° F	0
Flame Spread Index	10
Fire Rating	Class A
Smoke Developed	395
Fuel Contribution	0
Average Time of Burning	Self Extinguishing
Average Extent of Burning	2.379mm
Weathering	Passes per ASTM D3679
Windload Rating*	193 MPH

\* (Wind velocity based on IBC)



Produced with Armor Coat UVA™ and Solarkote® PB Acrylic High-Performance Polymers. An exclusive blend of the best raw materials, UV stabilizers and performance modifiers give Bristol Bay Vinyl Siding superb color retention and weatherability.



**Enhanced Impact Resistance**  
Bristol Bay Vinyl Siding exceeds industry standards for impact resistance by 25 percent to virtually eliminate dents or dings in siding. (Test: ASTM D3679).



2450 Enterprise St.  
Drawer A  
Fremont, OH 43420  
800 846-9599 • www.rmcsiding.com

30718 8/07 Printed in U.S.A. © Copyright 2004



Bristol Bay Vinyl Siding passes or exceeds all industry standards per ASTM D3679. Made in the U.S.A. by America's dedicated workforce. Specifications subject to change without notice. Solarkote® is a registered trademark of Arkema, Inc.